



STORE & DISPOSE OF CANNABIS SAFELY



Accidental ingestion (eating) of marijuana
can harm children and pets.

SAFE STORAGE

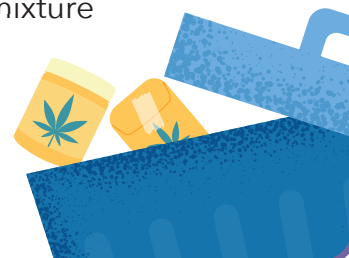
When you use cannabis, it's important to take safety measures to make sure it is always stored and disposed of, or thrown away, safely.



- Keep cannabis and cannabis products locked and in a secure place that cannot be found by those who shouldn't use it.
- Cannabis products should be out of sight and out of reach of children and pets.
- Use a safe or lockbox with a combination lock or keypad.
- Make sure any paraphernalia you use for cannabis (pipes, pens, bongs, grinders, rolling papers, etc.) are also stored in a locked, secure place.
- Make a list of cannabis products in your home; knowing exactly what products you have can help with medical treatment in case of accidental ingestion.
- Store cannabis products in their original containers and keep the label that includes how much THC is in the product.

CLEAN UP & DISPOSAL

- Cannabis waste includes all types of used cannabis. It also includes materials and packaging that has come into contact with cannabis.
- Be sure to clean up after using marijuana, including ground flower, crumbs, stems, lighters and matches.
- Cannabis waste should be mixed with other waste material, like coffee grounds or kitty litter, so it can't be used again.
- Your cannabis waste mixture should be in a taped and sealed container, like an empty yogurt cup, and thrown into the regular trash.



Call the CT Poison Control Center at **800-222-1222** or your child's doctor right away if you think your child might have ingested cannabis.

If a pet ingests marijuana, call Animal Poison Control right away: **888-426-4435**



To learn more, visit **BelnTheKnowCT.org** or scan the QR code.